



M2 Handy

DESIGNED TO MEET THE CHALLENGES OF STEEL
SURFACE PREPARATION

- ✓ Safe, clean and efficient one man operation
- ✓ No clean-up costs
- ✓ Fast and efficient removal of industrial coatings and corrosion combined with a vacuum closed circuit
- ✓ Cleans horizontal, overhead and vertical surfaces
- ✓ Ergonomic compact design
- ✓ User friendly operation
- ✓ Full service package

innovations that stick

vertidrive

M2 Handy

Is designed to carry out closed hydro blast operation on vertical, horizontal or overhead steel surfaces.

The machine adheres to the wall by a magnetic pneumatic drive assembly and can be easily maneuvered

The operator does NOT feel the effect of the back force created by the high pressure of the UHP pump. The magnetic drive absorb this force completely.

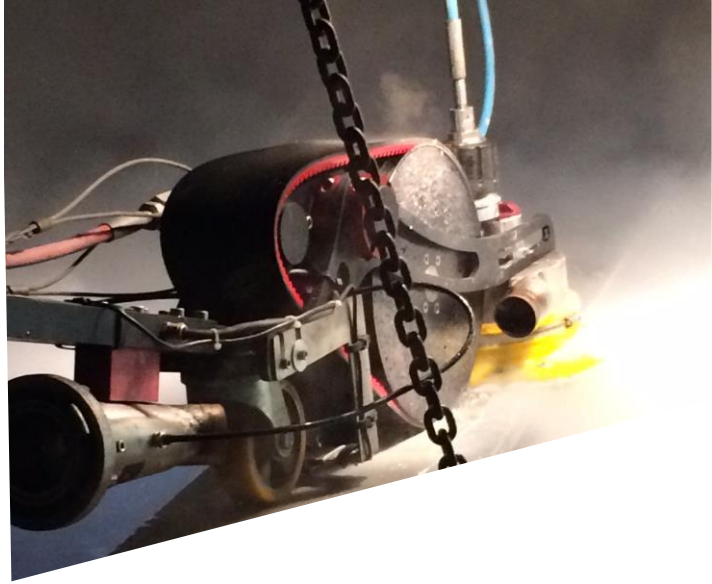
The blast can mounted in front of the drive system has a self rotating nozzle bar with 8 nozzles. A rotation speed of approx. 3000 rpm and a water pressure of 3000 bar with max 30 ltrs / min to ensure a clean and effective result.

All the water and paint can be collected with an optional vacuum and separation system.

On the handle the controls are easily accessible. Forward and backwards speed can be controlled with the same control handle.

A unique safety feature ensures that the connected UHP pump can only be switched on when the Handy is securely adhere to the metal surface.

In case the contact with the surface is being lost the pump automatically shuts off.



Technical specifications

General

Cleaning Width	190mm / 7,5 inch
Dimensions	1000 x 400 x 1450 mm / 40 x 16 x 57 inch
Total Weight	25 kg / 55 lbs
UHP Parts	Self rotating nozzle bar with 8 x M10 nozzles
UHP Capacity	Max. 3000 bar @ 30 l/min / 40000 psi @ 8 gal/min
UHP Connection	9/16" UNF LH
Vacuum connection	3" Storz connection
Vacuum capacity	Min. 400 m ³ /h / 14000 ft ³ /h
Average production rate	20 m ² /h / 215 ft ² /h
Wall contact switch	Integrated, for safe disconnect of UHP pressure

Pneumatic drive system

Connector male	Nipple 1/2" BSP
Connector female	Quick connect DN 7.8
Air consumption	Max. 750 l/min / 200 gal/min
Air pressure	6-7 bar / 85-100 psi
Hose length (Robot > Compressor)	50 meter / 164 feet